



BULLETIN NUMBER 7

DATE ISSUED: Friday 16th Aug 2024

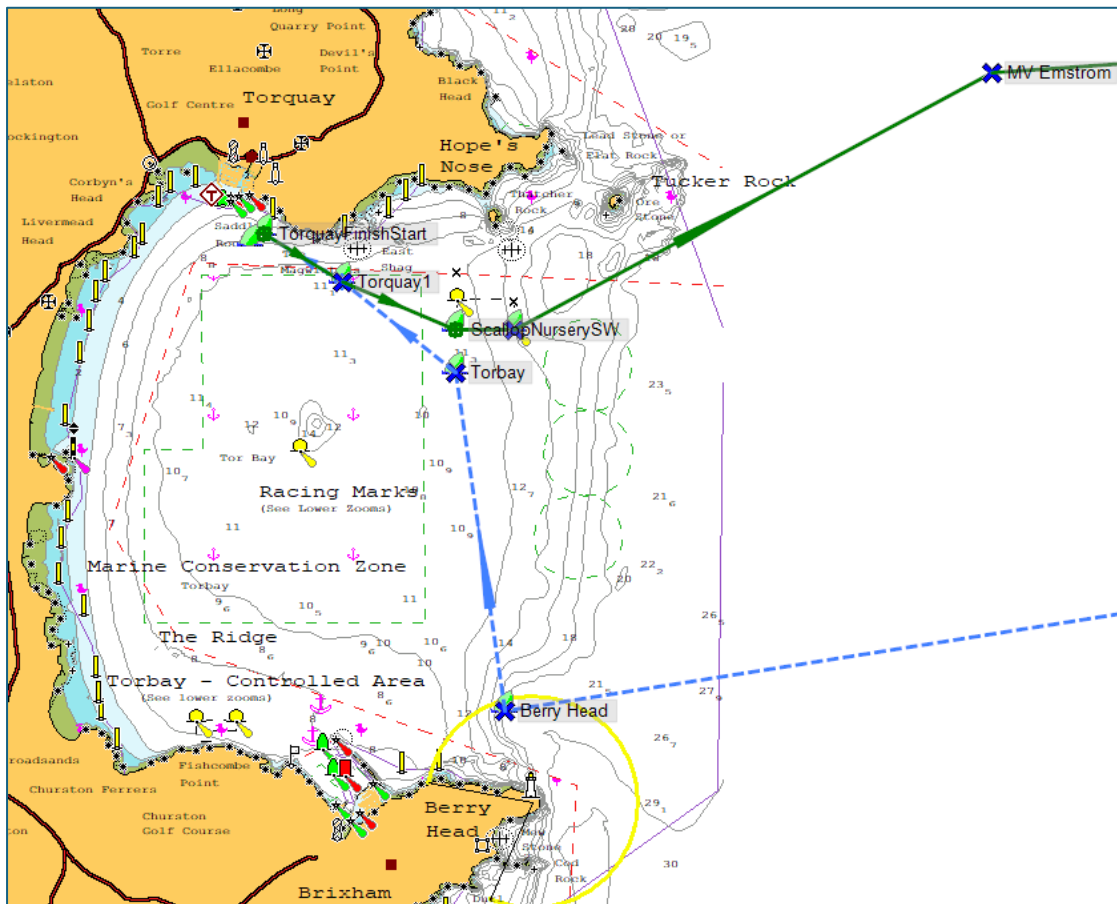
SUBJECT: Cowes Torquay Cowes course

The Cowes Torquay Cowes course finish at Torquay and Start at Torquay has been revised. This affects the Cowes Torquay race after Portland Bill and the Torquay Cowes race until MV Emsstrom.

The Course will now be as follows:

Cowes Torquay Cowes / Saturday August 24 th 2024			
Cowes to Torquay			
Name	Coordinates	Distance	Rounding
Muster	50° 46.310'N / 1° 16'.220 W		
Start	50°46'.400 N / 1° 18'.209 W	-	
East Lepe	50°45'.936 N / 1° 21'.070 W	1.87	PORT
Hurst Castle	50°42'.290 N / 1° 33'.024 W	8.40	STARBOARD
North Head	50°42'.698 N / 1° 35'.503 W	1.62	PORT
Hengistbury Head	50°42'.366N / 1° 44'.525 W	5.72	STARBOARD
Boscombe Cardinal	50°42'.950 N / 1° 50'.381 W	3.75	GATE
Boscombe Pier	50°42'.897 N / 1° 50'.388 W		
Bournemouth Pier	50°42'.604 N / 1° 52'.317 W	1.27	GATE
Bournemouth Laid	50°42'.472 N / 1° 52'.163 W		
Alum Outfall	50°42'.342 N / 1° 53'.397 W	0.73	PORT
Peveil ledge	50°36'.414 N / 1° 56'.074 W	6.17	STARBOARD
Durlston Head	50°35'.647 N / 1° 57'.021 W	0.97	STARBOARD
Anvil Point	50°35'.423 N / 1° 57'.636 W	0.45	STARBOARD
St Albans Head	50°34'.548 N / 2° 03'.367 W	3.74	STARBOARD
Portland Bill	50°30'.723 N / 2° 27'.443 W	15.77	STARBOARD
Berry Head (laid)	50°24'.500 N / 3° 29'.250 W	39.84	STARBOARD
Torbay (laid)	50°26'.450 N / 3° 29'.690 W	1.97	PORT
Torquay1	50°26'.970 N / 3° 30'.710 W	0.83	STARBOARD
Torquay Finish (Starboard)	50°27'.250 N / 3° 31'.430 W	0.54	GATE
Torquay Finish South (Port)	50°27'.190 N / 3° 31'.540 W		

	TOTAL	93.65	
Torquay to Cowes			
Torquay Start	50°27'.250 N / 3° 31'.430 W	-	STARBOARD
Torquay 1	50°26'.970 N / 3° 30'.710 W	0.54	STARBOARD
Scallop Nursery SW	50°26'.700 N / 3° 29'.690 W	0.70	PORT
Scallop Nursery SE	50°26'.700 N / 3° 29'.170 W	0.33	PORT
MV Emsstrom	50°28'.178 N / 3° 24'.855 W	3.12	STARBOARD
Portland Bill	50°30'.723 N / 2° 27'.443 W	36.61	PORT
Atomic	50°35'.016 N / 2° 11'.619 W	10.93	STARBOARD
St Albans Head	50°34'.548 N / 2° 03'.367 W	5.26	PORT
Anvil Point	50°35'.423 N / 1° 57'.636 W	3.74	PORT
Durlston Head	50°35'.647 N / 1° 57'.021 W	0.45	PORT
North Head	50°42'.698 N / 1° 35'.503 W	15.36	STARBOARD
Hurst Castle	50°42'.290 N / 1° 33'.024 W	1.62	PORT
East Lepe	50°45'.936 N / 1° 21'.070 W	8.40	GATE
Finish Boat	50°45'.844 N / 1° 20'.992 W		
	TOTAL	87.08	
		180.73	N Miles
		207.98	Miles
		334.71	KM

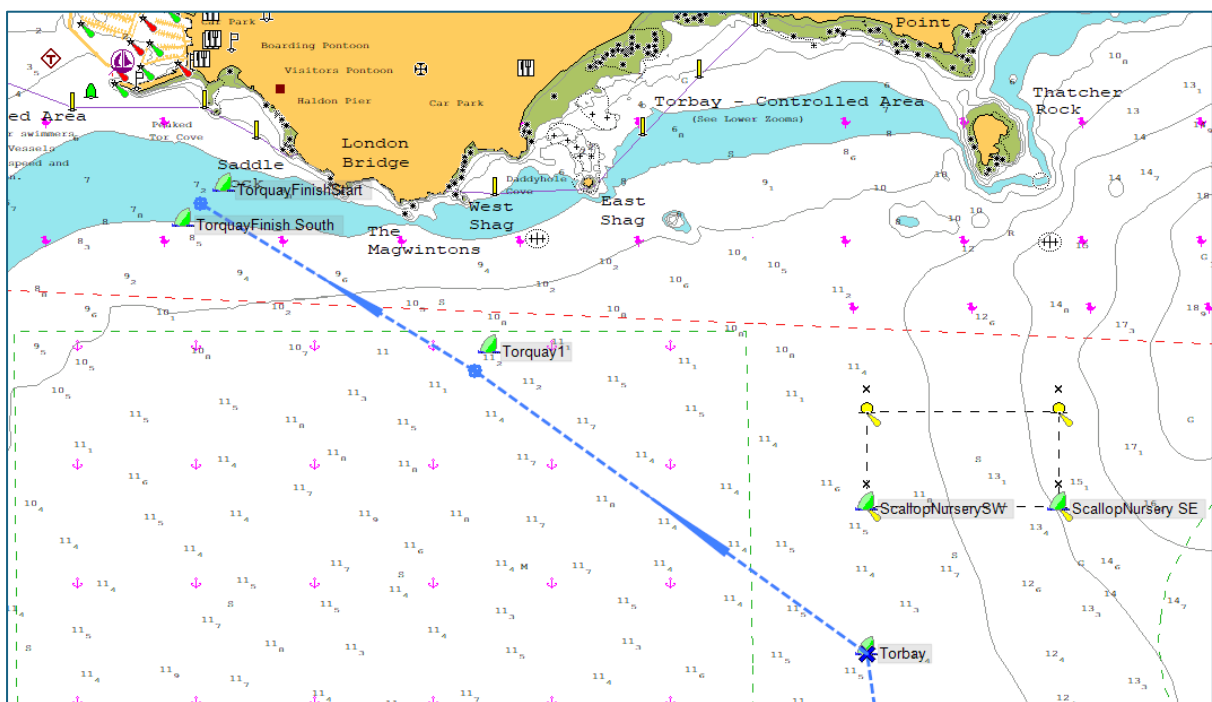


Cowes Torquay race finish

The Torquay 1 mark is a mark of the course and must be left to starboard. Torquay 1 is a sailing mark and is red in colour.

The finish line is between the Torquay Finish/Start Buoy (a yellow sailing mark) and Torquay Finish South which is a laid buoy.

The Finish/Start boat will be close to the Torquay Finish/Start Buoy.

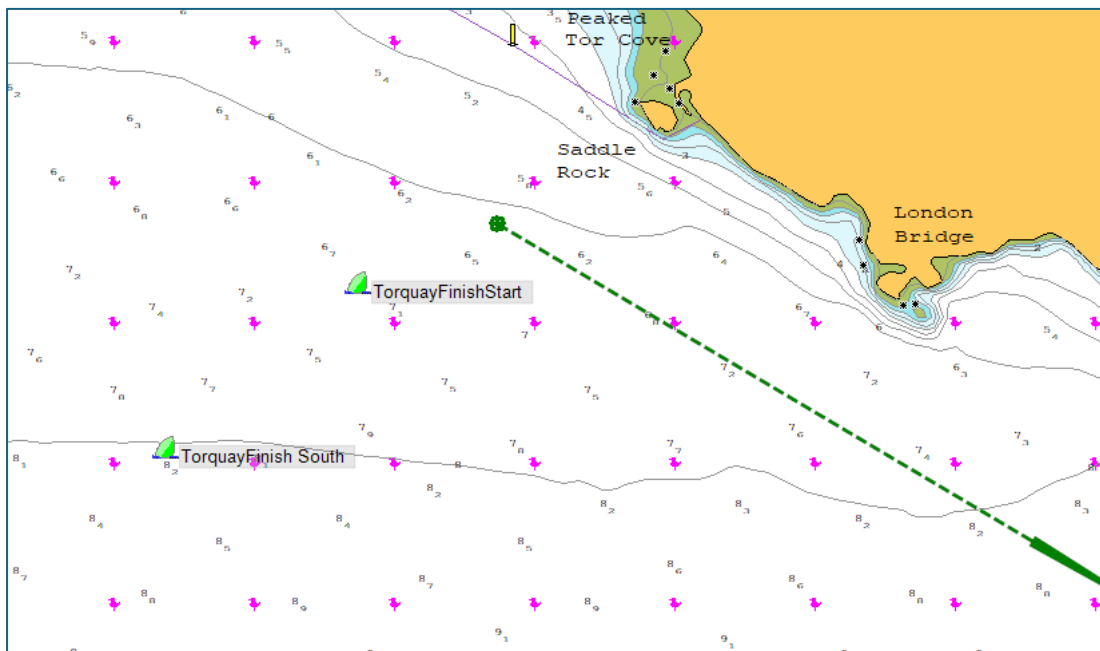
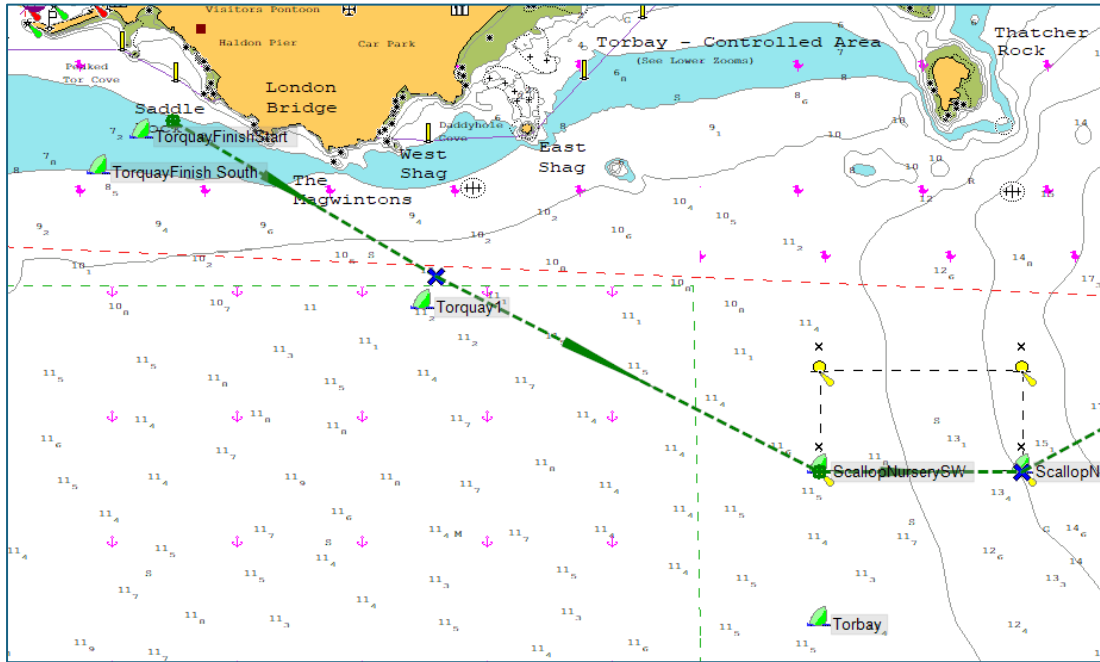


Torquay Coves race start

The start line is a line between the Torquay Finish/Start Buoy (a yellow sailing mark) and Saddle Rock.

The Torquay 1 mark is a mark of the course and must be left to starboard. Torquay 1 is a sailing mark and is red in colour.

Scallop Nursery SW and Scallop Nursery SE are yellow buoys and must be left to port. On no account must boats enter the Scallop Nursery area.



Martin Raby
OOD CTC, CPC & RTI
B.P.R.C.

Torbay Racing Exclusion Zone

A scallop nursery has been installed in Torbay marked by 4 yellow buoys in the following positions:

50°26.700'N 3°29.690'W

50°26.865'N 3°29.690'W

50°26.865'N 3°29.170'W

50°26.700'N 3°29.170'W

Within this area there are various ropes, cables and floats.

NO RACE BOAT IS TO ENTER THIS AREA UNDER ANY CIRCUMSTANCES.

THE PENALTY FOR DOING SO IS DISQUALIFICATION. IN ADDITION, CIVIL DAMAGES FOR DESTROYING FISHING GEAR MAY BE INCURRED.



Image showing Torbay scallop nursery marker buoy and floats